

# TUCANA

***Wide slitler and rewinder  
to convert rolls into narrow pancakes***

**Unwinding**  
*Déroutage*  
*Umrollen*

**Rewinding**  
*Bobinage*  
*Wickeln*



**Slitting**  
*Coupe*  
*Schneiden*



**CALEMARD**

***[www.calemard.com](http://www.calemard.com)***

# TUCANA

**Slitter and rewinder able to convert primary rolls into narrow pancakes from 6 mm and upwards**



## Products

- Sensitive woven fabrics
- Sensitive nonwoven fabrics

## Applications

- Ribbons,
- Labels,
- Filtration fabrics ...



## Flexibility

- Based on a **modular design**, the configuration of the Tucana can be easily retrofitted to support the changes of your production needs
- **A wide range of cutting systems**, combined with easily adaptable production parameters, enables the narrow slitting of most stable woven and nonwoven products



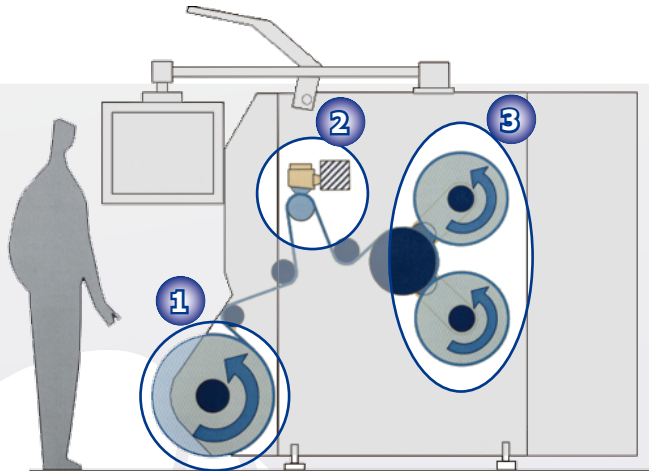
## Quality

- **Low and controlled winding tension and centre surface rewinding** ensuring a perfect product quality for sensitive products
- **Staggered rewinding on two shafts** for rewinding quality of narrow strips
- **Precision guiding** to minimize selvedge scrap and optimize the cutting accuracy
- **Hot slitting, crush or combined cutting** for a perfect slitting quality whatever the type of product and the application



## Productivity

- Only **1 operator** is required to handle the machine
- Swivelling control panel



Integrated unwinding station



Cutting systems



Duplex centre surface rewinding



### Unwinding

Integrated unwinding station



### Cutting

Precise guiding system  
1 cutting system (hot, crush or combined cutters)



### Rewinding

Duplex centre surface rewinding

## Technical specifications

	Standard	Option	
• <b>Mother roll :</b>			• <b>OPTIONS :</b>
Max width :	1,800 mm	2,200 mm	Separated unwinding station for A-frame/bock
Max. diameter :	600 mm		Splicing unit
Max. weight :	200 Kg		Inspection table
• <b>Secondary roll :</b>			2 cutting systems (hot, crush or combined cutters)
Max. diameter :	450 mm		Scrap rewinders
Max. weight (per shaft)	100 Kg		Unloading trolley
• <b>Max. running speed :</b>	60 m/min		Quick adjustment cutting system
• <b>Mini. slitting width :</b>	6 mm		
• <b>Mini. tension (per shaft):</b>	20 N		

Non contractual pictures and technical specifications - Last update : Nov. 2012



Record Number: 2011072750

## Spoolex SAS

ZI du Buisson - 7 Rue de la Poudrière  
42230 Roche la Molière - France  
Tel. +33 (0) 477 90 00 34  
Fax +33 (0) 477 90 36 83  
calemard@spoolex.com

