

AQUILA SD

***Digital slitting and spooling line to
convert secondary rolls into very
stable spools of fragile/slippery/
narrow materials***

Unwinding

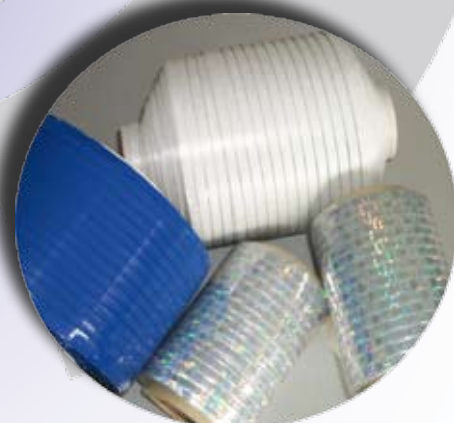
*Déroutage
Umrollen*

Rewinding

*Bobinage
Wickeln*



Slitting
*Coupe
Schneiden*

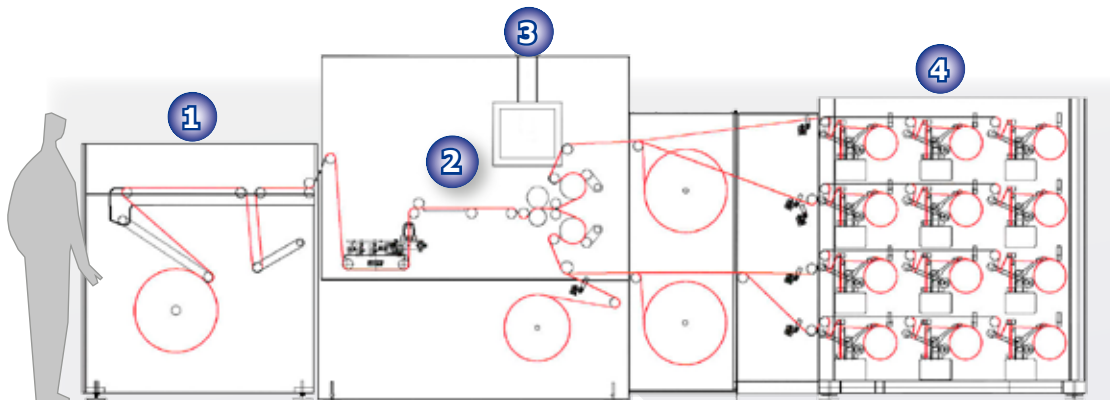


CALEMARD

www.calemard.com

AQUILA SD

Digital slitting and spooling line to convert fragile or narrow fabrics into compact spools with different shapes depending on your products and needs



- 1 Driven cantilevered unwinder
- 2 Cutting station
- 3 Swivelling control panel
- 4 Digital spooling units

The digital function allows managing shapes and spooling technology: conical/pyramidal, step-winding...

- Products**
Perfect for narrow AND slidy materials!
 Nonwovens, films, foams, adhesives, laminates, PTFE, Kapton, PET, Alu/PET...
- Flexibility**
 - Based on a **modular design**, the production capacity of the Aquila can be easily increased from 12 to 36 spooling units to follow the increase of your production needs
 - A wide range of cutting systems** are available on the same machine, enabling the best cutting result whatever the type of product or application (crush, shear, fixed or floating razor blades...)
- Quality**
 - Very low and controlled winding tension** preventing product damage and allowing best-in-class unwinding capability on downstream machines
 - High precision guiding system** to minimize selvedge scrap and optimize the cutting accuracy
 - Digital traverse winding for shape and spooling technologies management
- Productivity**
 - Only **1 operator** is required to handle the machine
 - Swivelling control panel



Unwinding
Driven cantilevered unwinder



Cutting
Shear cutting system
In option, 2 or 3 cutting systems on the same machine



Rewinding
Digital spooling technology

Technical specifications

- Mother roll :**
 - Max width : 200 mm
 - Max. diameter : 500 mm
 - Max. weight : 100 kg
- Spool :**
 - Max. dimensions: Ø 200 mm x 200 mm
- Max. running speed :** 150 m/min
- Mini. slitting width :** 3 mm
- Mini. tension (per shaft):** 1 N
- OPTIONS :**
 - Double unwinding station
 - Manual splicing table
 - 3 cutting systems (crush, shear, fixed or floating razor blades)
 - Scrap edges rewinder
 - Spool ejection system on specific trolley for productivity increase

Non contractual pictures and technical specifications - Last update : Nov. 2012



Certified company

Record Number: 2011072750

Spolex SAS

ZI du Buisson - 7 Rue de la Poudrière
42230 Roche la Molière - France
Tel. +33 (0) 477 90 00 34
Fax +33 (0) 477 90 36 83
calemard@spolex.com

